

TENANT BULLETIN

VGT - Gate 20A Closure

- What:** Permanent closure of Gates 20A
- When:** From Thursday, May 21, 2026, 6:00 a.m. (0600 hours)
- Where:** Gates 20A. See attached/included detailed map for specific location(s).
- Why:** Work is part of larger project to remove some existing old structures to increase available aircraft parking and to improve overall communications network within the airport.

Impacted

Tenants: Personnel who previously used gates to access airfield.

Notes: Access through above noted gate will no longer be permitted. Access to airfields will still be available through Gates 7A following closure.

If anyone has questions, they may contact:

David Fiedler – 702-261-5724 (Day Contact)

For additional information, contact the Airport Control Center at 702-261-5125, option 1.

Visual Aids: See below

CLARK COUNTY DEPARTMENT OF AVIATION
TENANT BULLETIN
P.O. BOX 11005
LAS VEGAS, NV 89111-1005
tenantbulletin@LASairport.com

For the latest news and information.

Become a fan on Facebook:

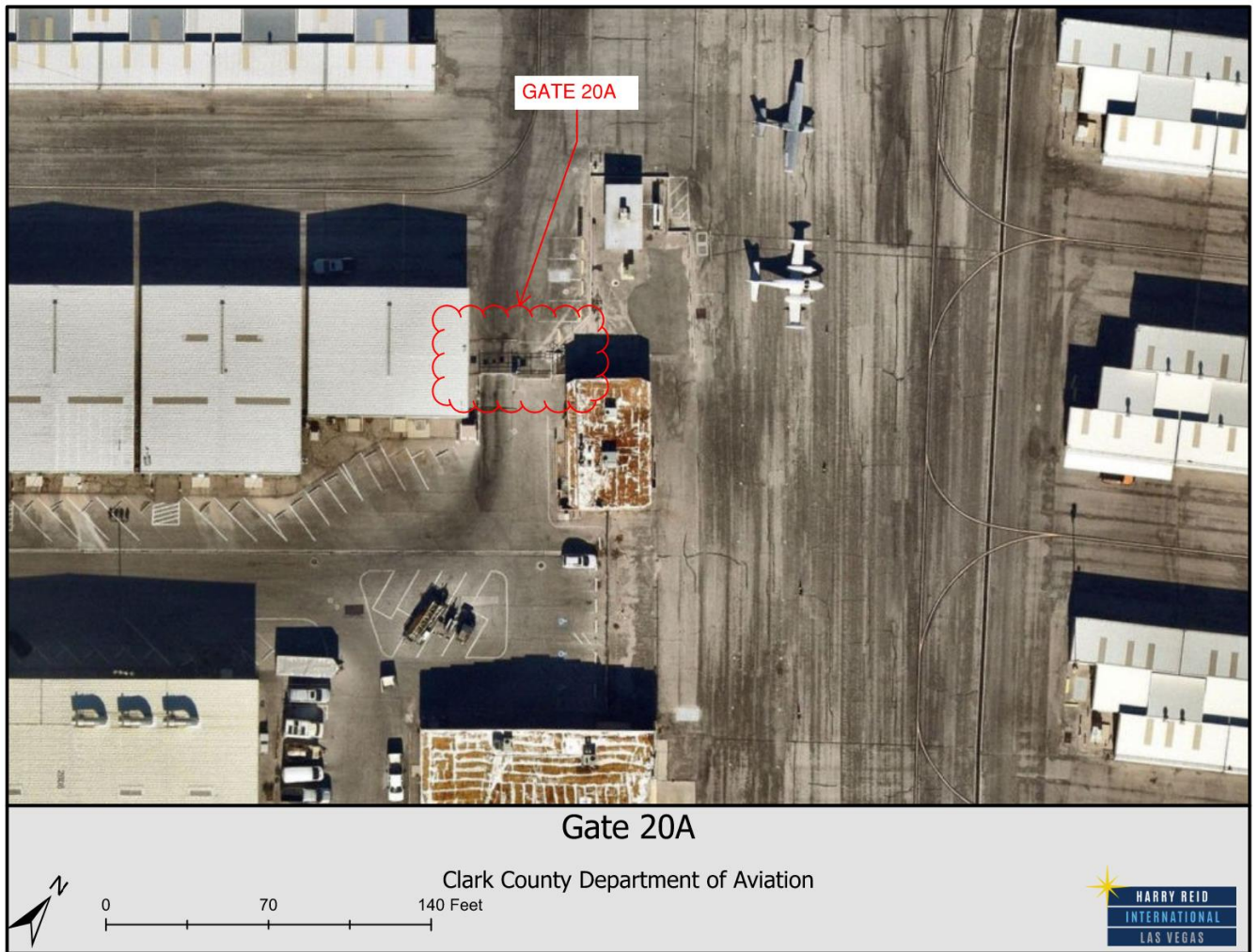
www.facebook.com/LASairport

Follow us on Twitter:

www.x.com/LASairport

Note: The information contained in this message may be privileged and confidential and protected from disclosure. If the reader of this message is not the intended recipient, or an employee or agent responsible for

delivering this message to the intended recipient, you are hereby notified that any dissemination, distribution or copying of this communication is strictly prohibited. If you have received this communication in error, please notify us immediately by replying to the message and deleting it from your computer.



Note: The information portrayed is for display purpose only. No liability is assumed as to the accuracy of the data delineated hereon.

5/22/2026